



Quest Extreme Rx Hall of Fame:



1.74 SV -60 Sph with Myodisc



1.55 SV with 40 Diopters Out



Lenticular Franklin: Top +27, Bottom +31

A word from Michael.....

Thank you for your interest in our lab. Quest Specialty Lab is the result of a gap in the industry I noticed over 15 years ago. Wholesale Labs found themselves turning down work due to freeform automation's inherent curve and prism limitations or spending large amounts of capital trying to produce complex jobs. Often, their efforts to do the work in-house resulted in costly redoes and delivery delays both of which negatively affecting profits and professional integrity.

Upon recognizing this new reality, we opened Quest as a 'support lab' where wholesalers could send only the most complex jobs with total confidence. Since we only do specialty work, there is never any worry about outsourcing to the competition. We see ourselves in partnership with our customer labs and therefore, have made an effort to offer very accessible pricing resulting in your profitability and our mutual growth. Lastly, our quality guarantee, means that you will receive the best optical performance and, as a result, maintain your pristine professional image.

*We look forward to the opportunity
to exceed your expectations!*



QUEST VISION CARE SPECIALTY LAB

The Lab's Lab



*The optical industry's #1
independent specialty lab*

Quality

Quick service

Quintessential optics



QUEST VISION CARE SPECIALTY LAB

The Lab's Lab

9103 132 Avenue N

Largo, Florida 33773

Tel: 727-581-4100 Fax: 727-581-2890

Email: questvisioncare@gmail.com

Website: www.questopticallab.com

*We have never refused a
prescription order yet!*

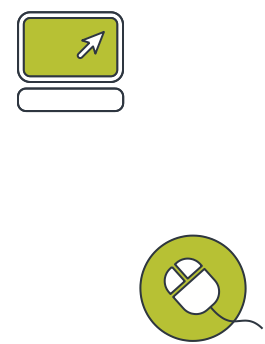
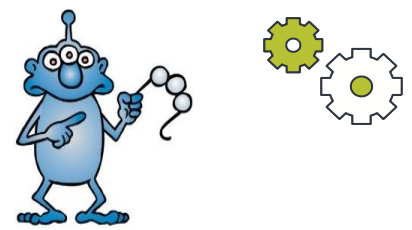
No matter how extreme, complex or unusual the request may be..... we **ALWAYS** find a solution and a way to deliver.

NO LENS POWER OR PRISM AMOUNT IS OUT OF RANGE AT QUEST!

"Yea... we can do that."

HOW QUEST IS DIFFERENT....

- * No extra charge for specified base
- * No extra charge for extra thick lens
- * No extra charge for scratch coating
- * No extra charge for hand edging
- * No extra charge for rushed jobs
- * Always 1 set price for add +/- 20 Sph
- * Always 1 set price for any power slab
- * Always 1 set price for any power/prism
- * Always 1 set price for any size HDRD
- * Always free expert consulting



WHY QUEST?

- Wholesale labs receive approximately **3-5** specialty jobs per every **1000**
- Most lack highly specialized;
 - Equipment, tooling, jigs
 - Software
 - Skills & Knowledge
- AS A RESULT, there are **3 options**;
 - Refuse the Rx altogether
 - Attempt to make it in-house using the best & brightest technicians
 - Outsource to a specialty lab

➤ **Quest Offers:**

- Specialized equipment, tooling, jigs
- Proprietary HD digital software
- Unique lens-form configurations
- Unparalleled optical knowledge

➤ AS A RESULT, **your lab will**;

- Receive the best solution possible
- Maintain its pristine image
- Never lose money

SPECIALIZING IN:

- Any out of range Rx
- Slab On & Slab Off
- Negative Adds
- Extreme Adds
- Mineral glass (Diving Masks)
- Pilot Quadrafocals
- Telescope Rx lenses
- Thinned Blended Edged Prisms
- Franklins
- Strong Prism
- Laser Filters
- Myodiscs
- Baby Glasses
- MEI Edging
- Channel Prisms
- Prism Segs

